



Where in the World would you like to be in summer 2018?

Paris Fashion Study Abroad FCSE 490

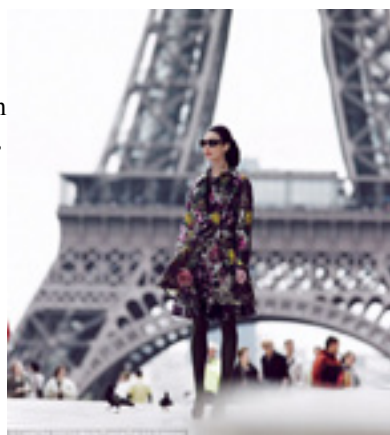
Open to all majors (no background necessary)

Seminars by French fashion professionals include: the French customer and Paris fashion scene, survival French language, sustainable fashion, French trade-show production, visual merchandising (LVMH) for the luxury market, trend forecasting, and Olfactory (perfume) making and marketing.

Fieldtrips will take you inside: Dior with a private tour by the Vice President for Public Relations, YSL archives and workshop, the House of Lesage (where you will get a chance to learn luxury embroidery techniques), a sustainable fashion workshop, Mr. Smith's made-to-measure luxury men's wear atelier, a fashion exhibit in one of the Paris palaces, a jewelry design workshop, and a visual merchandising tour.

Sightseeing includes: a half-day Paris city tour, a boat ride on the Seine, a tour of the beautiful and ancient French covered passages, all the main shopping centers of Paris (Le Marais, St. Germaine, Galleries Lafayette) including several famous concept stores (Merci, Chantal Thomas), Luxembourg Gardens, etc.

Optional travel (cost not included): Students have a 2.5-day weekend in which they may choose to travel to another country such as England, Italy, Spain, or Germany.



Travel deposits: Students may pay for travel deposits by check, credit card (American Express, Visa, and MasterCard only), or money order. (A schedule of payments will be provided.)

Where to pay: College of Continuing and Professional Education (CCPE). CCPE is open M-F from 8am to 5pm, and can be reached at 562-985-5561. Students may also pay deposits by phone using a credit card.

NOTE: CSULB course tuition of \$921 and medical insurance of \$85 is paid separately in spring 2018. \$750 scholarships are available. Scholarship application deadline: March 12, 2018.

**June 2-15,
2018**

Approximate Cost:
\$2,400

Included:

- Accommodation in apartment/hotel (double occupancy): walking distance to college
- All breakfasts
- Orientation session
- Paris transportation pass
- Excursions and field trips

Not Included (but required):

- Airfare
- CSULB tuition (\$921)
- Travel (medical) insurance (\$85)
- Passport fee
- Personal expenses

To enroll:

1. Submit application to Professor Marshall
2. Pay \$750 (non-refundable) deposit to CCPE by Oct. 2, 2017

Course taught by: Professor **Suzanne Marshall** (CSULB Fashion Merchandising and Design) in collaboration with Paris fashion professionals.

For more information and application form contact Professor Marshall at Suzanne.Marshall@csulb.edu or see:

www.csulb.edu/international

Faculty permission required.

